



Digital Colour Printers & Copiers

Digital Black & White Printers & Copiers

Large Format Printers & Copiers

Fax & Franking Machines

Duplicator Printers

Document Management

**COST EFFECTIVE SOLUTIONS**

## ABOUT US



Welcome to ASL, part of the Automated Systems Group. Founded in 1991, Automated Systems Group PLC is one of the largest independent reprographic and print solutions suppliers in the UK. With over 4000 customers we supply the latest technology from many of the world's leading manufacturers. We offer impartial advice and consultancy, excellent flexible finance options and unparalleled service support giving total peace of mind and value for money.

We are proud to be an OPEN (Online Procurement for Educational Needs) approved supplier to the education sector and to be a member of the Milton Keynes and North Bucks Chamber of Commerce.

# helping you decide



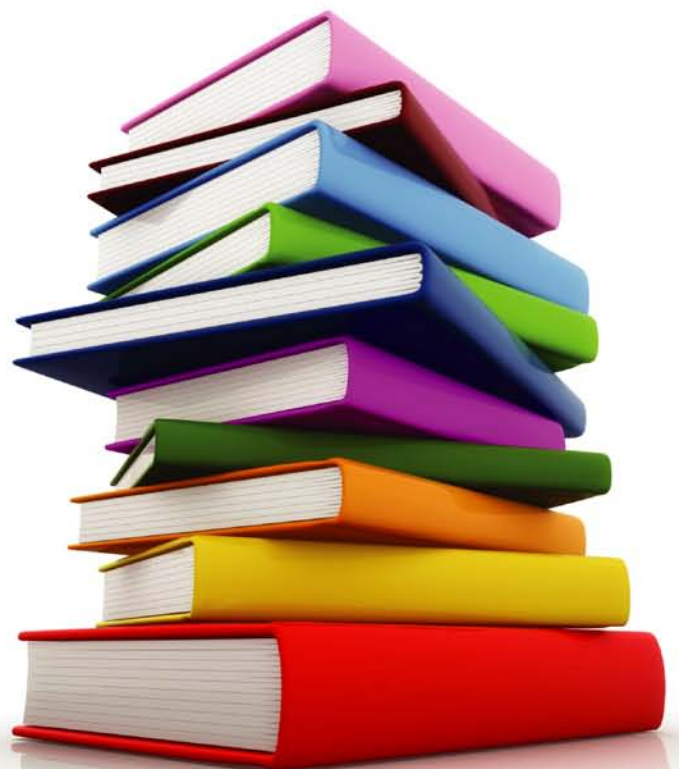
## The best solution for you

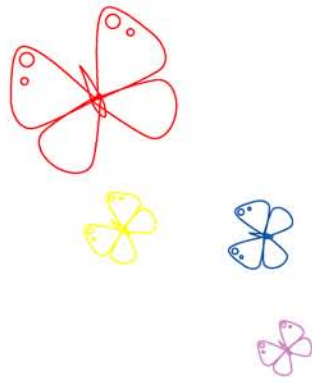
As a true independent supplier we listen to your needs and tailor the best bespoke solutions for your requirements. We recognise and appreciate the impact that supplying the correct solution at the right price with the best service support has on your business. We will work with you to ensure that our solutions give the best possible productivity and reliability at all times.

- Impartial advice & consultancy
- Latest technology
- Bespoke solutions
- Reliable productivity
- Unrivalled service & support

## Professional services

To accompany and compliment many of our products and services, we offer a range of cost effective software solutions that add value to your investment. Can you track and control your document production? Do you really know how much you spend on prints and copies? Which of your devices are being properly utilised and when they are most cost effective?

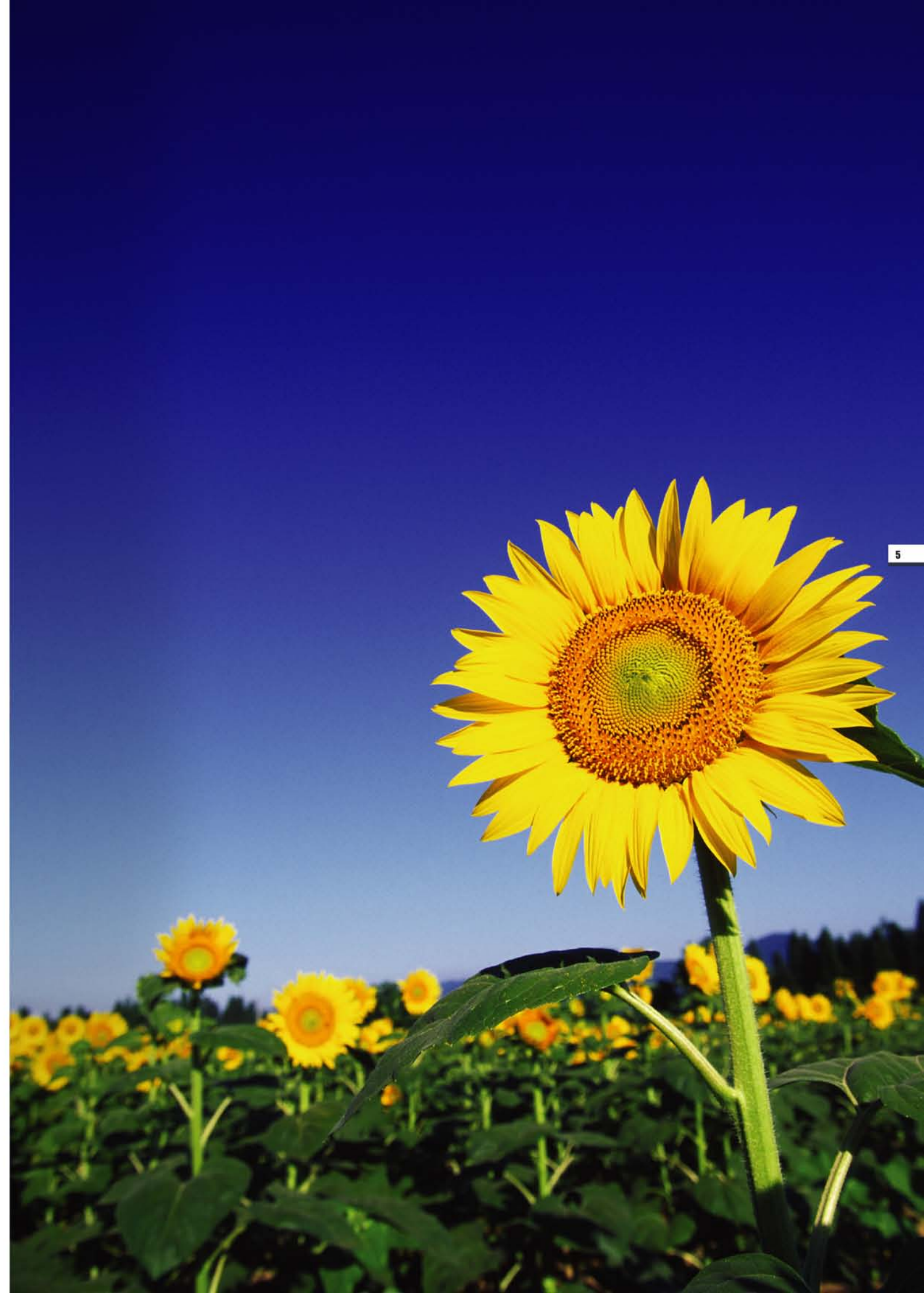
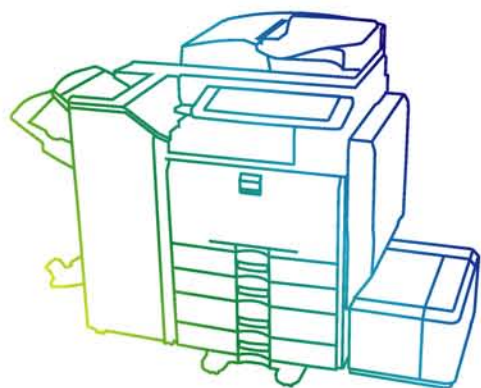




# ENVIRONMENT

Automated Systems Group recognises the need to adhere to policies that both protect the environment and promote good working practices designed to minimise the effects of pollution. We fully intend to comply with all legislation and official Codes of Practice whilst having regard to other practices which assist in providing environmental protection of the air, land and water.

ASL is committed to protecting the environment, conserving natural resources and preventing pollution. Our machines and consumables are responsibly returned for recycling and we choose suppliers who are committed to recycle materials and produce zero waste to landfill wherever possible. We strive to continuously review and implement products and working practices that minimise our impact on the environment.



## Digital colour printers & copiers

Colour documents empower your business in many ways and make your prints and copies more effective. Add colour to your business with one of our colour products to enhance your presentations, newsletters and marketing material without the need for an additional colour printer. Our range of colour multifunctional devices gives you all the benefits of colour without the cost. All of our machines offer state of the art technology and all inclusive service contracts are available. The colour solutions we supply provide:-

- Low running costs - fully inclusive
- Duplex functionality with no loss of productivity
- Consistent reliability
- High quality full colour production
- True multi-functionality - print, copy, scan and fax from virtually all networks

## Digital B&W printers & copiers

If you are looking for a cost effective black & white solution, we are able to offer a range of world-class devices that offer quality, speed and reliability. Whether you require a small personal multi-functional device or a high-speed, multi-functional workhorse, we offer an extensive and varied range of products to meet your needs. Our black & white solutions offer:-

- Output speeds from 15 pages to 780 pages per minute A4
- A range of online or offline finishing options
- Low cost, long life consumables for saving money and the environment
- Full integration into virtually all office networks
- True multi-functionality offering print, copy, scan and fax capability

# adding a whole spectrum of colour to your business



**RICOH** **infotec**

**KYOCERA** **UTAX**

**OKI** **Duplo** **TOSHIBA**

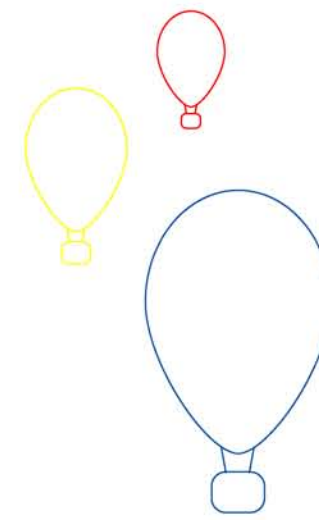
**LEXMARK** **Canon** **hp**

**PRINT AUDIT** **FILESTAR** **equitrac**

## Large format printers & copiers

We supply a range of easy-to-use solutions for your large format printing, copying and scanning needs up to A0. With some of the quietest and most compact machines available, our solutions provide simple day-to-day operation and maintenance, making multi-functionality an efficient addition to your business.





## DOCUMENT MANAGEMENT

Today's devices give you the ability to incorporate and embrace multi-functional technology from literally anywhere - at home, in the office or on the move. Therefore it's more important than ever to properly manage your total document workflow from accessibility and cost through to creation and storage. With products such as P-COUNTER you can control all aspects of document production including:-

- Who can access which devices
- How many documents can be produced
- Automatically route documents based on output cost
- Control waste out to save money and the environment

Many of today's products are not just multi-functional but are also capable of managing their own costs and reliability. Software solutions can identify areas of high expenditure, track the productivity and efficiency of your work-flow and will help to protect and maintain your investment. We offer a free consultancy service to help you identify which of these will add value to your business or organisation. With products such as 'Print Audit', 'equitrac' and 'Filestar' we can offer true accountability and real cost savings.



# cost effective and green



## Fax & franking machines

We offer a wide range of fax and franking machines to cover all requirements. Multi-functional fax products provide high quality functionality and output. With a variety of mailing options franking can help you properly manage your outgoing mail with benefits including:-

- Integrated modem & scales to automatically reload and calculate postage
- Personalised logo or slogan for a professional image
- Departmental accounting available to summarise postage costs

## Duplicator printers

For fast reliable on-demand print needs, duplicators can offer the solution. With duplicators from the best names in the industry such as Duplo and Priport printing upto 150 pages per minute, the many benefits include:-

- Variable High capacity print speeds
- A range of standard coloured inks - easy to change for maximum impact

## Managed print services

We offer customers the ability to control and manage all of their copying and printing under an all-embracing "managed print service". We can optimise the use of your current fleet of equipment, whether supplied by ASL or not, and add or change equipment where required. To achieve cost savings, flexibility, quality of document output and total visibility within an agreed cost and service level we will:-

- Understand and identify your real printing costs
- Develop a tailored print strategy
- Design a new bespoke document environment
- Manage and Control your costs and processes
- Continuously review and improve your solution

# AFTERSALES



At ASL, we understand that having made the decision to invest in new technology, the ability of your supplier to provide prompt, reliable service and maintenance is of paramount importance. For this reason, our customers enjoy service and support that is second-to-none.

11

We offer guaranteed same-day service response on virtually all of our products. Offering fully comprehensive maintenance agreements at competitive prices, we recognise the need for quality service by fully trained engineers.

All service and support requests are managed by a dedicated team who can often resolve issues over the phone. However, should this not be possible they can accurately diagnose problems for the best possible resolution. We can offer bespoke out of hours service if you need it or alternatively we are able to carry out service requests on a 'Time and Materials' basis if you prefer.





**Head Office**  
10 Viking Way  
Bar Hill  
Cambridge  
CB23 8EL  
t. 01954 782 333  
e. [enquiries@aslplc.co.uk](mailto:enquiries@aslplc.co.uk)

**Milton Keynes Office**  
1 South House  
Bond Avenue  
Bletchley  
Milton Keynes  
MK1 1SW  
t. 01908 634 090  
e. [enquiries@aslplc.co.uk](mailto:enquiries@aslplc.co.uk)

**London Office**  
70 St Mary Axe  
London  
EC3A 8BE  
t. 020 3102 4362  
e. [enquiries@aslplc.co.uk](mailto:enquiries@aslplc.co.uk)

**Midlands Office**  
Tameway Tower  
48 Bridge Street  
Walsall  
WS1 1JZ  
t. 0845 070 6305  
e. [enquiries@aslplc.co.uk](mailto:enquiries@aslplc.co.uk)

**Bromsgrove Office**   
Connect House  
Waterside  
Stoke Prior  
Bromsgrove  
B60 4FD  
t. 08704 28 28 28  
e. [enquiries@connect.uk.net](mailto:enquiries@connect.uk.net)

[www.aslplc.co.uk](http://www.aslplc.co.uk)